



Konica Minolta bizhub 754e

75 PPM Copier • Printer • Scanner • Fax



Reliability.....	Excellent
Multitasking.....	Very Good
Administrative Utilities	Good
Feedback to Workstations.....	Good
Ease of Network Setup.....	Good
Print Drivers.....	Very Good
Scan Functions.....	Very Good
Print/Copy Quality	Excellent/Very Good
Print/Copy Productivity.....	Good
Ease of Use.....	Excellent
Feature Set.....	Very Good
Security Features.....	Excellent
Accessibility Features	Not Rated
Environmental Features	Not Rated
Toner Yield.....	Good

BLI RECOMMENDATION

The Konica Minolta bizhub 754e proved to be an outstanding overall performer during its extensive lab test. Proving itself to be highly reliable, the device required no service and experienced no misfeeds over the course of its 300,000-impression durability test. Print quality was excellent overall, exhibiting sharp and dark text, highly distinct and consistent lines and halftones with clear separation between all levels. Scan speeds were among the fastest of any machines tested to date in all modes evaluated, and productivity when printing and copying booklets was above average. Also easy to use, the control panel supports multi-touch controls, such as swipe, double-tap, rotate, pinch-to-zoom and drag-and-drop features supported by smartphones and tablets, and offers users a choice of three menu structures. While installing some of the utilities is time-consuming, technicians found the print driver installation to be one of the easiest among competitive devices, as it allows administrators to install drivers for multiple engines at once. In addition, the device offers helpful features such as colour scan preview and standard scan to PowerPoint. Offering a very good feature set as well as a competitive price point, the bizhub 754e is highly recommended by BLI for an average optimum monthly volume of 93,500 impressions.

Test duration: Two months, including a 300,000-impression durability test.

Maximum monthly duty cycle¹: Information not supplied by vendor.

Average optimum monthly volume for models in this speed range: Up to 93,500 impressions².

¹ The maximum monthly duty cycle is the maximum volume, as specified by the vendor, that the unit is capable of producing in a month; however, it isn't recommended that the unit be run at this volume on a regular basis.

² Based on a survey conducted by BLI. When comparing models, note that this optimum volume was instituted in May 2012. Optimum monthly volumes for models tested prior to May 2012 may be higher or lower.

STRENGTHS

- Highly reliable
- Excellent print image quality
- Among the fastest scan speeds in all modes
- Above average productivity when printing and copying booklets
- Excellent ease of use; BLI award-winning control panel allows for choice of interface
- Colour scan preview allows users to view, delete and rotate pages
- Above average paper weight support; optional saddle-stitch kit supports up to 80-page booklets
- Simple print driver installation; administrators can install drivers for multiple engines at once
- Highly detailed consumables feedback and job status via web utility; simple procedures for replacing toner, which can be done on the fly
- Standard scan to PowerPoint and optional scan to Word and Excel
- Job skip function holds a job when resources are unavailable so that other types of jobs can be run

WEAKNESSES

- Administrators cannot log into the web utility while the device is printing, scanning or copying; when administrators are logged into the utility, users cannot print, scan or copy
- If administrators log in to the web utility while the machine is in sleep mode, the machine automatically wakes up and warms up, unnecessarily increasing energy use
- Any user can access the device's address book and program destinations from the web utility
- Limited feedback to workstations
- Installation of utilities is very time consuming

TEST RESULTS AND OBSERVATIONS

+ , - and ○ represent positive, negative and neutral attributes, respectively.



RELIABILITY

EXCELLENT

- + Over the course of its 300,000-impression durability test, the Konica Minolta bizhub 754e required no service calls and experienced no misfeeds.
- Upon setup, BLI technicians found that when the Copy key was pressed, they were being taken to the scan menu. This was resolved with a firmware update.



MULTITASKING

VERY GOOD

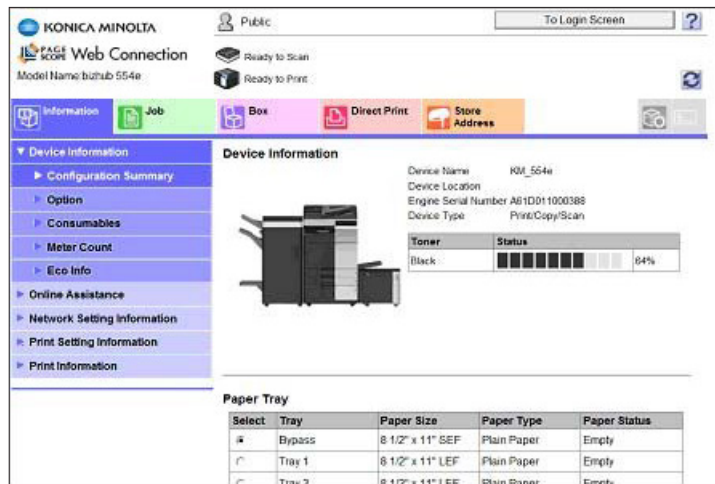
- + The device experiences virtually no delay between jobs, and the number of both print and copy jobs that can be stored to the device is limited only by memory.
- + When the machine is out of paper, users can still copy to memory, download print jobs from the network, and scan to a destination.
- While the machine is jammed, users cannot reserve copy jobs or download print jobs from the network, though they can still scan jobs to a destination.
- Unlike some other devices tested, while documents are being scanned through the document feeder (scan or copy modes), users cannot start to program ahead.
- A priority mode for one of the unit's functions cannot be set. Jobs are output on a first-in, first-out basis, with no job type taking precedence over another.
- + Via the device's job skip capability, jobs for which resources are not available are automatically held, allowing jobs for which resources are available to be run. Once the resources of the held job are replaced, the job will continue running where it left off.
- To pause a job in progress in order to perform an immediate copy job, the user selects the Interrupt hard key and is able to access most features required for a typical copy job (document feeder, multiple sets, duplexing and finishing). During testing, the Konica Minolta bizhub 754e automatically returned to non-interrupted copy and print mode in approximately 60 seconds and restarted the job. While this device immediately stops the interrupted job, technicians prefer some devices that allow the current job to continue running until the interrupting job is programmed.
- Secure print jobs can be released during a standard print job.



ADMINISTRATIVE UTILITIES

GOOD

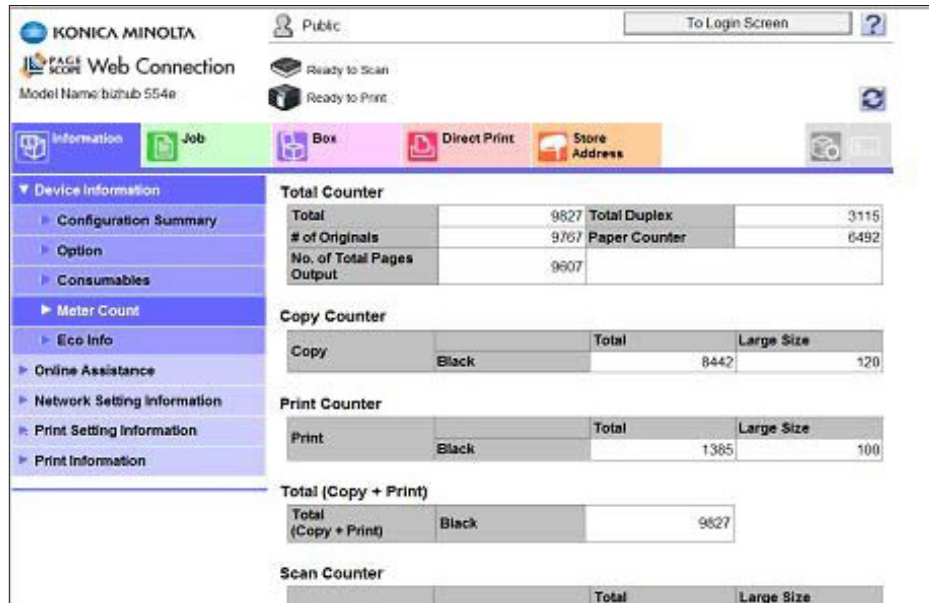
- A continuing concern with Konica Minolta's web utility, PageScope Web Connection, is that users cannot print, scan or copy if the administrator is logged into the web utility. In addition, administrators cannot log in to the device while it is printing, scanning or copying.
- In addition, if administrators close out of the web utility before logging out, they must wait until the device times out in order to re-access the web utility.
- + The web utility does provide highly detailed consumables status on toner, drum, fusing unit, ozone, transfer roller unit and image transfer roller unit in 1-percent increments. The web utility also provides the date on which some consumables installed, and forecasts a date on which the drum, transfer belt unit and toner filter will need to be replaced. A flashing indicator is available at the top of every screen when toner is near empty.



Highly detailed consumables status is available through the web utility. (U.S. model pictured)

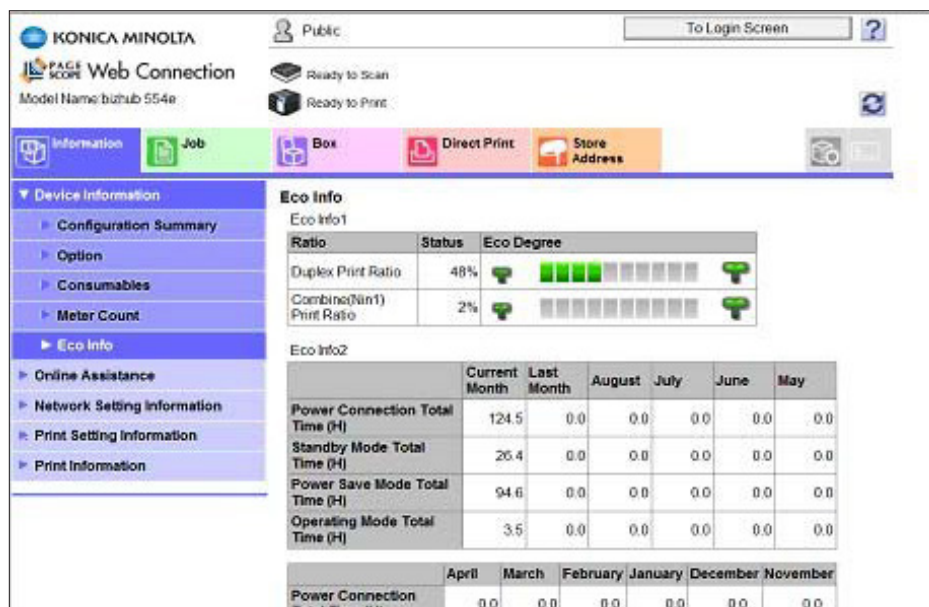
- Paper tray status is available, but only indicated as ready or empty. Paper type and size for each drawer are also indicated.
- + Email alerts are highly customizable and can be set up for up to 10 email addresses and five IP addresses for when errors occur or consumables are low or depleted. Available alerts include replenish paper tray; paper jam; preventive maintenance call; replace staples; replace toner; replace imaging units; replace fusing unit; replace ozone filter; replace transfer belt; finisher tray full; waste toner box full; and service call. Auto emails can also be set up for users when a print job is completed.
- + Three additional email alerts can be set up for counter notification. Administrators can set up a separate notification schedule for each address.
- Any user can access the device's address book and program destinations from the embedded web utility, whereas BLI prefers to have this reserved for administrators.
- Administrators cannot export job history as a CSV file, a capability available on many competitive machines.
- LDAP cannot be used to program destinations.
- The device can be restarted remotely via the web utility by an administrator.
- If administrators log on to the web utility while the machine is in sleep mode, the machine automatically wakes up and warms up, unnecessarily using energy.
- + Status information is available on currently running as well as pending jobs, and completed print, copy, scan and fax jobs. Job priority can be changed and pending jobs can be deleted. Print and copy jobs are stored in the same queue, and job details available include user name/ID; job number; job type; document name; time stored; number of copies; job status; and number of pages and sets. Print and copy jobs are stored in the same queue. Job history includes job name, job type, time stored, number of copies and result.

- The web utility supports the ability to clone capabilities for a fleet of devices, including device settings, counter, authentication information, address and copy protect/stamp. However, administrators must export and import settings for each of these areas individually, which is a time-consuming process.
- + The web utility includes a Box Operations function, whereby administrators can set up private and public User Boxes that can be viewed at the control panel or in the utility. It also gives administrators remote access to multiple bizhubs and User Boxes. Passwords can be enabled so users can or can't be allowed to view, move, edit or print documents stored on the unit. A thumbnail view of each stored file in a user box is provided. Operations available for selection in each user box include print, send to other device, download to PC, move/copy, format, delete and delete user box entirely. Auto deletion of user box files can be scheduled for a specific day or time, or even specified to never delete.
- While an index search can be conducted to locate an individual's user box, when a box is created users must select where to index the file, with available selections including ABC, DEF, GHI, etc. If a user with a name that begins with "G" selects the "ABC" index, it could make it difficult for a user or administrator to search for and find a particular user box.
- Anyone can access the Box Operations function and add and delete addresses as well as user boxes without being logged into the web utility. Private (password-protected) boxes can be created by anyone, but require a password to delete (unless logged in to administrator mode). It would be preferable to limit these functions only to administrator mode, as there is no way to track who is creating or deleting boxes.
- At the control panel, users do not need to enter a password to scan to a private user box. This opens up the possibility of users accidentally scanning to boxes they do not have access to, and therefore cannot access or delete their document, which may contain sensitive material. BLI would prefer confidential storage.
- Users can preview and zoom pages of documents stored in User Boxes at the control panel. Blank page removal is not supported.
- + PageScope Direct Print allows for direct printing of files in PDF, TIFF, XPS, PostScript, PCL, JPEG, Text, OOXML and PPML formats. Features supported include number of sets; sort; offset; paper tray selection; simplex/duplex; quantity selection up to 9,999; original orientation; and auto or manual page zoom from 25 to 400 percent. Output methods including proof print and secure print are also supported, as is the ability to save in a user box.
- + With PageScope Direct Print Hot Folders users can create a networked folder with pre-determined settings (such as booklet or duplex), and drag and drop jobs into the folder to be printed without having to open the driver, web page or software tool.
- + Direct print is also available using the web utility.
- + Electronic counters at the web utility are highly detailed, and include a total counter, as well as a breakdown of copy, print, scan and copy and print jobs.



Counters (U.S. model pictured)

- + The new Eco Indicator at the web utility provides details on percentage of jobs run in duplex and N-in-1 mode, as well as hours in power save mode, standby mode and operating mode by individual user when authentication is enabled.



Eco Indicator (U.S. model pictured)

- + Konica Minolta vCare is available, alerting resellers of device issues and allowing for remote troubleshooting of some hardware issues so technicians won't have to be dis-

patched for every issue. The server-based solution reports on hundreds of data points, including toner coverage and environmental metrics, and captures data on device attributes such as document output by function, colour/black, simplex/duplex, and page size. Scan jobs are also tracked, including send to email or store on the hard drive.

- + Net Care Device Manager is a free network device management utility that allows for monitoring of any SNMP-compliant output device on the network, along with the ability to manage the settings of Konica Minolta devices. It features a customizable device list that shows the status of MFPs and printers at a glance, and devices can be placed into groups—such as by location or department—for easier monitoring and management. The device list can also display engine speed and device functionality such as colour capable and duplex capable. The utility offers customizable email alerts to warn Help Desk or other personnel about printer problems as they arise. Administrators can also see and change dozens of settings for Konica Minolta devices remotely, while the Multi-Setting tool allows them to copy device settings from a particular Konica Minolta device and “clone” those settings to other devices on the network.
- Net Care Device Manager relies on SNMP polling to discover device status, rather than device-initiated SNMP traps. Therefore, IT personnel may not be able to learn about an error condition in as timely a manner as traps provide. Several other leading device management utilities BLI has tested offer both traps and polling capabilities. It also does not offer a preconfigured device group/folder for devices with errors, where warning or alerts are automatically added or subtracted dynamically. Such a dynamic folder would allow an administrator to see problem devices at a glance.
- + Organizations can choose to purchase four add-ons to Net Care Device Manager, making PageScope Enterprise Suite: PageScope Account Manager; PageScope Authentication Manager; PageScope MyPrint Manager; and PageScope MyPanel Manager. All five modules, including the free-of-charge Net Care Device Manager, share a common underlying database and main user interface for streamlined deployment and administration. As a result, customers can start with a basic solution and add components over time without having to re-deploy the server software.



FEEDBACK TO WORKSTATIONS

GOOD

- + Print Status Notifier, the feedback utility, can be configured by the user to provide pop-up messages when a print job is completed, when a print job is deleted and when misfeeds occur. Additional pop-up messages include when the device is out of paper—if there are no other jobs in the queue—and if a job programmed does not have matching paper size. Multiple pop-ups appear in one window, which is the method preferred by BLI technicians, although users are required to click “close”, whereas the pop-ups dissolve automatically for some competitive devices. In addition, icon alerts on the taskbar to indicate error conditions are supported, as are audible alerts.
- The feedback utility also provides a detailed job list.

- While the drivers are bidirectional, information is limited to paper size, orientation and type, whereas some competing machines provide additional information, including job and consumables status.
- + The drivers provide a link to Konica Minolta's web utility, which provides highly detailed information on job status and consumables, including remaining toner, drum, fuser, transfer roller unit, ozone and image transfer roller unit life in 1 percent increments. Additionally, alerts for various conditions can be sent to up to 10 email addresses, five IP addresses and one IPX address.
- Paper tray, waste toner and staple cartridge status are also available from the web utility, but only indicated as ready or empty.



EASE OF NETWORK SETUP

GOOD

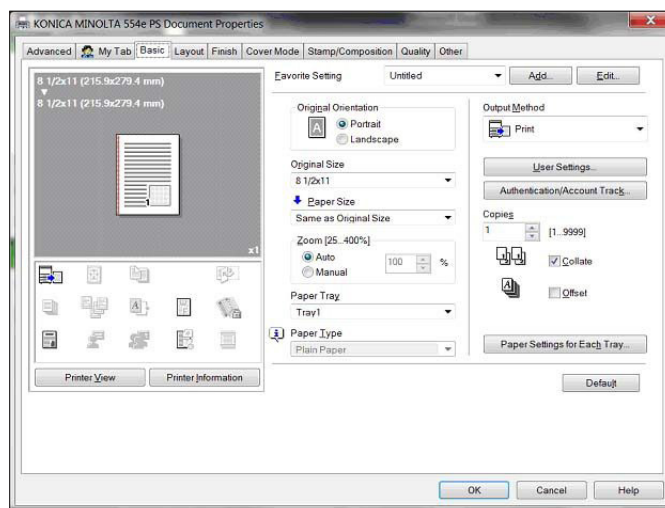
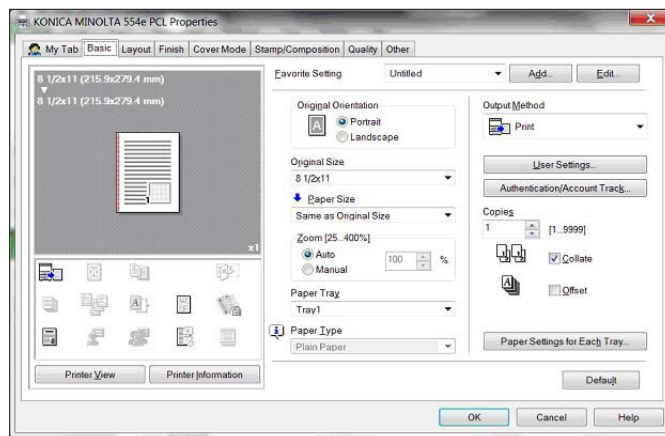
- + There are four CDs included with the device. One CD contains the PCL, PostScript and Fax driver, which can be installed simultaneously. It takes eight clicks to install both the PCL and PostScript drivers, which is fewer than required for many other devices tested to date. The drivers detect configured accessories and the port is automatically created.
- + Administrators can simultaneously install drivers for multiple bizhubs in the same install session. Because all the eligible devices are automatically selected by default, the install for multiple engines can be done in the same number of clicks it would take for one device. Once this step of the installation is complete, a menu appears with selections to print a test page, rename the driver, check the options configured and change the default settings for each driver.
- The full complement of administrative and network utilities is on a separate disk from the drivers. Each utility must be installed individually. This is a very time-consuming process, as administrators must first separately download each piece of software they wish to install, and then manually go through the install process for each one. A more integrated routine is preferable.
- Whereas with most other systems in which the selection of the .NET framework is transparent to the administrator, here administrators must select the correct version of the .NET framework prior to installing any of the utilities.
- + The Driver Packaging Utility enables administrators to remotely save settings for drivers and distribute them to workstations for uniform operation across the organization.
- A third CD contains HTML-based user manuals that support searching by function. The manuals include illustrations as well as text, and reside on the CD and are not installed onto the PC.



PRINT DRIVERS

VERY GOOD

- + Network printing is standard. The unit is equipped with an 1.2-GHz processor and offers PCL 5e/c/6 and PostScript 3 drivers. Standard, non-upgradeable 2 GB of RAM is shared between the printer and copier, as is the standard 250-GB hard drive. Support for XPS printing is also standard.
- + While the most commonly used features are available on the main tab by default, users can customize both the PCL and PostScript drivers to their liking via the MyTab feature. MyTab allows users to configure their own frequently used features on one tab, thereby removing clutter that's oftentimes confusing and unwanted. Not only can users move selections from the left side to the right side, and delete items from the tab, but they can also add any selections available from any of the additional tabs. Administrators can also determine if a user has access to My Tab and who can customize it.



The graphical layout of the drivers is identical, making navigation easier for users who frequently switch between them. (U.S. model pictured)

- + The drivers are defaulted to duplex mode.

- Via the Paper View and Printer View buttons on the left side of the driver screen, users can view a graphic of the job being programmed, with paper size, orientation and finishing selections portrayed, for example, or a graphic of the machine configuration itself. The graphic of the machine indicates which paper drawer and output tray is selected for the current job. However, it does not support point-and-click selection of the different paper drawers.
- While there is an icon-based job review, technicians would prefer a more straightforward, text-based list of programmed settings.
- The Printer Information button on the left side of the driver screen opens the PageScope Web Connection web utility, which provides device and consumables status.
- + The Favourites setting, which is available on every tab of the driver, allows users to store commonly used job types for simple programming. Via the Edit button, users can review the selection for each favourite, change its priority, name it and add a comment in regard to what settings each favourite represents. The icon representing the Favourite can be changed, and the Favourite can be shared. Favourites can also be imported and exported to allow administrators to create favourites and share settings with any connected users.
- The way users are prevented from selecting incompatible settings is complicated. The incompatible feature is not selectable and an alert icon to the left, when hovered over, lists the various conflicts. The user must then navigate from tab to tab to change each setting in order to use that feature. Or, in some cases, the conflict is a result of an option that isn't configured, which is beyond the user's control. Technicians would prefer the option to select the setting and automatically change the incompatible settings, or have the selection completely ghosted out.
- + Output methods supported include print; secure print; save in user box; save in user box and print; proof print; and ID and print.
- + Unlike with some other devices tested, details of secure print jobs are hidden until an ID and password are entered at the device. User IDs can be up to 16 characters, and passwords can be as long as 64 characters. Users can store these credentials in the driver, so they can use the same ID and password each time. Multiple secure print jobs with the same ID and PIN can be released simultaneously, but when more than one job is selected, settings can't be changed. When printing one file, users can change the number of sets, simplex and duplex settings, booklet printing, zoom range and finishing options, prior to releasing jobs.
- + The drivers provide a file path to access the secure print functionality on the device's control panel, and unlike for previous generations, this file path is accurate.
- Five keystrokes are required to access the secure print screen, and once users enter the document ID and credentials, only one more keystroke is required to release each secure print job.
- After a job is released, users can delete jobs without entry of a passcode.
- + The feature set for programming exceptions is very robust. An unlimited number of

exceptions can be programmed for each job, which is a capability not offered on some competing machines. For example, page one can be pulled from tray 1 and printed in simplex mode, while pages two through five can be pulled from tray 3, printed in duplex mode, and stapled. Exception page programming selections include mixplex, subset finishing and multiple paper drawers, but not image quality adjustment. Up to five paper sources can be used per job.

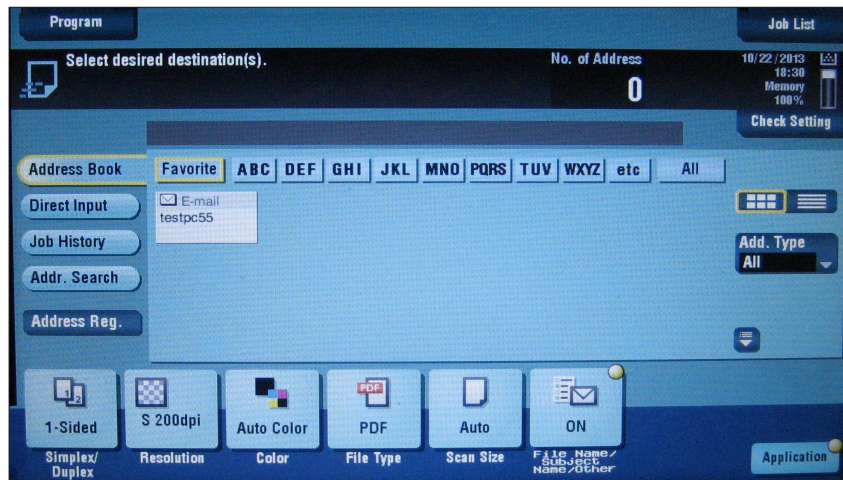
- The procedures for setting up complex jobs with exceptions are unintuitive.
- In the default auto paper selection mode, cover mode is not supported, and the selection is ghosted out. When users toggle over the icons next to the cover mode selection, a message pops up telling users that paper selection other than auto must be selected, requiring users to return to the Basic tab in order to change from auto paper to a specific drawer for the job.
- + All paper sources are also available for programming covers—up to five total when fully configured.
- Tab printing was also complicated to program initially, as users must know to select the bypass tray as the default tray prior to programming tabs. That being said, tab programming is more feature-rich when compared to several competing models. Various quantities of tabs and custom headers can be programmed. Tab text programming capabilities include font colour, size, style, orientation and tab position.
- + Envelopes are supported through the bypass tray, and the driver makes it very clear that only the bypass tray supports envelopes.
- It takes eight clicks to program a multiple-set print job fed from the second drawer with stapling and duplex using the PCL and PostScript drivers. To program a booklet print job, 10 clicks are necessary.
- + The drivers offer a very good overall feature set, including N-up (2 to 16) printing; overlay; quantity selection up to 9,999; reduction/enlargement from 25 to 400 percent in 0.1 percent increments; blank page removal; carbon copy mode; custom watermarks; transparency interleave; toner-save mode; and poster mode (from PCL driver).



SCAN FUNCTIONS

VERY GOOD

- + The bizhub 754e's standard colour scan function has a rated speed of up to 90 ipm for single-sided scanning in both colour and black. Scan speeds in colour simplex and duplex modes are among the fastest of the group. In black mode, simplex scan speed is also among the fastest of the group, and in black duplex mode, scan speed is in fact the fastest of the group.
- File formats supported include TIFF, PDF, compact PDF, JPEG, XPS, compact XPS and PPTX. Scan destinations include email, hard drive, SMB, FTP, WebDAV and Internet fax. TWAIN scanning and LDAP support are also standard, as is print from USB capability. Scan resolutions supported include 200 x 200, 300 x 300, 400 x 400 and 600 x 600 dpi.



Scan Menu (U.S. model pictured)

- BLI technicians noted that in black mode, selections for JPEG, PPTX, compact PDF and compact XPS are not supported and should be ghosted out. When PPTX and compact XPS and PDF formats are selected in black mode, an error message is displayed; when JPEG is selected in black mode, the setting automatically switches to a compatible colour mode without warning.
- + PPTX mode allows users to scan to PowerPoint, which is a useful feature not offered standard by most competitive devices.
- Although not standard, searchable PDF is supported via the optional LK-105 i-Option kit; enhanced AES 128-bit PDF encryption is supported via the optional LK-102 v3 i-Option kit; and DOCX and XLSX (Word and Excel) file formats are supported through the LK 110 i-Option Kit.
- + The unit's on-screen QWERTY keyboard features large, comfortably spaced keys that are clearly delineated from each other, which makes it easy to enter scan destinations manually. An optional keyboard and keyboard holder are available to simplify the process.
- While the keyboard features a dedicated "." key for use in email addresses on the main screen, a dedicated "@" key is not available for selection at the main screen. In addition, carbon copy and blind carbon copy selections are not supported.
- + Up to 10 short messages and/or pre-populated subject lines can be stored.
- + Users can scan to several destinations in a single session and can also print or copy a hardcopy at the same time.
- + Although by default pages are displayed after they are scanned, a colour scan preview can be enabled that allows not only for the viewing of pages, but also the deletion of pages, the rotation of pages and post process editing.

- + Duplex scanning is selectable from the main screen of the scan menu.
- + Background removal and blank page removal are both supported.
- Colour dropout mode is not supported. This feature, which would enable users to remove background colour elements from forms or other documents, can be a great aid to automatic document processing such as OCR (Optical Character Recognition) or OMR (Optical Mark Reader).
- + Searching for addresses on any of the five LDAP servers is available via the control panel. Users can search by first and last name, e-mail address and fax number. Furthermore, there's an advanced search function that allows users to search by city, company or department.
- + Destination addresses entered manually at the control panel or accessed via LDAP can be added to the device-resident address book on the fly by end-users.
- It takes 11 keystrokes to perform a scan-to-e-mail job using LDAP support with a 300-dpi file when sending to one destination. Adding another destination requires only one more keystroke, bringing the total to 12.
- Job build is supported for mixing of pages from the document feeder and the platen, as well as simplex and duplex changes between batches.
- Scan to USB is disabled in default for security purposes, but can be turned on by the administrator. This is difficult to figure out, however, as no warning is available that indicates Scan to USB is disabled and organizations may not even realize that scanning to USB is available.
- + The menu is automatically populated when a USB flash drive is inserted into the device. In contrast, with some other systems, users must navigate through several menus to locate the USB printing capabilities.
- The USB menu times out after a few minutes and an icon to return to the menu then appears on the main screen, however, it is small and may be easily overlooked. Administrators can customize the main menu to display a large icon for external memory when a USB drive is connected, however the icon doesn't remain on screen once the USB drive is disconnected.
- + Users can scan to USB in PDF, TIFF, and XPS, as well as JPEG, PPTX, and compact PDF and XPS file formats (the latter four in colour/greyscale modes only). Colour modes supported include Auto Colour, Full Colour, Greyscale and Black. Users can browse into subfolders and name files.
- Users cannot create a folder for scan to USB from the control panel.
- + Encryption (hi or lo) for scan to USB files is supported.
- + Users can print from the USB drive in PDF, JPEG, TIFF, PPTX and XPS file formats. Users can browse into subfolders, and can select and print multiple file types at the

same time. Users can apply duplex settings, finishing capabilities, specify media source and print multiple sets.

- + Print from USB also supports the ability to store files in user boxes on the device.
- When selecting and printing a JPEG file, only one JPEG file is supported at a time.
- Preview does not work for USB files. In fact, when users select the Preview hard key, the job automatically begins to print. If preview is not supported for USB files, the key should not be selectable. Nothing happens when the Preview hard key is pressed while programming a scan to USB job.
- There is no blank page removal for USB files.
- There is also no job build for USB files.
- Four clicks are required to release a single print from USB job at the main folder level in default settings. Just one more click is required to release two jobs.
- + While there's no compression in black mode, compression in compact PDF colour mode worked well throughout testing, reducing file size to a level that was smaller than that of most devices tested to date.



PRINT/COPY QUALITY

EXCELLENT/VERY GOOD

- + Text in print mode was very good, with sharp lines, dark, fully formed characters and average smoothness of curves and serifs. No toner overspray or haloing was detected.
- + Line art in print mode was excellent, earning above average marks for closely spaced fine lines that were distinct and of a consistent thickness, as well as for formation of circles. No toner overspray or haloing was detected.
- + Halftones in print mode were excellent, as they were visible over the entire range, with distinct separation between all levels. Smoothness of halftone patterns were also above average, and no banding was evident.
- + Solids were rated very good in print mode, exhibiting above average darkness and average consistency of coverage.
- In copy mode text was rated good, earning above average marks for smoothness of curves and serifs, and average marks for darkness, sharpness and formation of characters.
- Line art was also rated good in copy mode; distinction of fine lines, consistency of line thickness and formation of circles all earned average marks. An average amount of stair-stepping was evident in diagonal lines.

- + Halftones were excellent in copy mode, visible over the entire measured range, with distinct separation between all levels. Smoothness of halftone patterns was average, and no banding was evident.
- + Solids were very good in copy mode, exhibiting above average darkness and average consistency of coverage.



PRINT/COPY PRODUCTIVITY

GOOD

- When using the PCL and PostScript drivers to print BLI's job stream, which simulates typical traffic in a busy workgroup, productivity is competitive with the group.
- Productivity when printing sets was competitive with the group in both simplex and duplex modes.
- Productivity was competitive when copying sets in all modes.
- First-copy times are competitive from both the platen and the document feeder.
- + When both printing and copying in booklet mode, productivity was above average.



EASE OF USE

EXCELLENT

- + The Konica Minolta bizhub 754e features several enhancements to the 229-mm electrostatic display available on previous models, including support for dragging and dropping, pinch-to-zoom and the ability to rotate pages in a scan preview using multi-touch controls. Other features include touch-and-swipe scrolling and the ability to detect a finger from about an inch away and automatically wake up from energy-save or sleep mode. The panel also enables users to drag and drop files in a User Box to perform certain functions and rearrange pages in edit mode. In addition, users can drag and drop the electronic keypad to any desired position on the control panel screen so that users can enter data without important information being obstructed from view.
- + Users have a choice of three control panel interfaces, and all are easily accessible. The numeric keypad is available with touch-sensitive and hard keys.
- + The control panel can be tilted freely, and provides a dedicated hard key for enlargement.
- The electrostatic control panel display requires use of a stylus pen or a finger in order

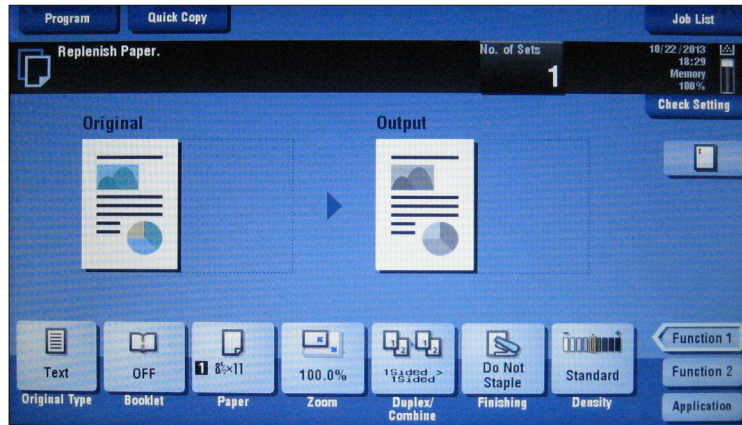
to make selections. Other objects, such as the back of a pen, cannot be used. It also proved difficult at times to scroll through some screens, such as the job queue.

- While the brightness of the display is above average, contrast adjustment can only be done via the Accessibility key on the main screen. It would be preferable to have a dial at the side of the control panel.
- + The Guidance hard key is dynamic, pulling up information on the particular setting that is currently selected.



Konica Minolta bizhub 754e Control Panel (U.S. model pictured)

- + The Quick Copy menu is straightforward and simple to use. It's very graphical, utilising both text and icons, with most of the settings for typical jobs accessible from the first screen, including paper source, reduction/enlargement and simplex/duplex. When the Finishing key is selected, a separate menu opens up on top of the Quick Copy screen for users to select finishing options, and therefore users never have to leave the main screen to program finishing capabilities.
- + While small in size, an active toner gauge is accurate and available right on the main display when using the Quick Copy menu interface. Gauges for developer, drum, fusing unit, transfer roller unit, image transfer belt and ozone filter, all in 1-percent increments, are available via the utility menu.
- + Paper gauges are available indicating the amount of paper remaining in each drawer via the paper selection screen. In addition, lights on each paper drawer indicate when any of the drawers are empty.



Basic Copy Menu (U.S. model pictured)

- + The Basic copy menu was also found to be very simple to use. Icons across the bottom display selected job settings; to change the settings, users simply have to press the desired job setting key, such as colour mode or duplex, and a separate menu pops up over the main screen.
- While two selections can be added to the Basic copy menu for quicker access, they are icon-based, and do not clearly indicate the selection they represent.
- + The Application key (which is located on the side of both menus) allows users to access the Timeline interface, in which a sliding bar allows users to easily jump over from menu to menu. The layout is intuitive, and menu selections are clearly named, and include Basic, No. of Originals, Quality/Density, Layout, Tailoring, Stamp/Composition, Copy Security, Erase and Other. The Timeline interface is also available for scan and fax settings.
- + When a change is made to any of the selections in a particular menu that is displayed in the Timeline interface, it is indicated on the sliding bar with a yellow icon, allowing users to quickly know which menus have been changed out of default settings. Moreover, each possible selection in a menu has its own indicator, so users will quickly know which job attributes have been changed. The yellow icon also appears on the Application key when a change has been made.
- PageScope My Panel Manager, an optional component of PageScope Enterprise Suite, allows a custom profile to be created and stored for each registered user so when a user logs in at the MFP, his or her personal preferences, such as default home page or language, are displayed. My Panel Manager also enables “scan to me” and “scan to home” buttons that allow users to quickly send documents to their own email address or preferred folder.
- + Users can save settings for up to 30 copy jobs, and can also store up to 400 scan presets and three image quality presets for simple programming, which are accessible from the Program key at the top of the copy and scan menus.
- Two hard keys are programmable to allow users to quickly access their preferred mode

(copy or scan, for example), saving additional clicks that would typically be required to get back to the home screen and then select a mode.

- + The job list offers great detail for copy, print and scan jobs and allows jobs to be moved up in the queue, although jobs in queue can't be modified. The job list includes user name; file name; job number; type of job; time job stored; total number of pages; and count up pages and sets. All copy and print jobs are maintained in a single queue, and the view can be changed to show just print or scan jobs.
- While illustrations and text instructions for removing misfeeds are provided, they are not as simple as with other devices. The illustration doesn't show the exact location of the misfeed and some steps of the removal process are left out. Additionally, there is a "start guidance" key that must be pressed at the beginning of every series of steps (for each misfeed). In some cases, users must press the next key to move through each step; some devices offer more dynamic, accurate misfeed instructions.



Some Misfeed Locations (U.S. model pictured)

- + Toner replacement is simple and clean, and toner can be loaded on the fly. Instructions for replacing toner are provided on the control panel. Waste toner container is also user-replaceable.



Toner replacement is clean and simple, and toner can be loaded on the fly. (U.S. model pictured)

- + Paper drawers are easily adjustable, with sliding guides, as well as automatic paper sensors that detect the size of paper when loaded. Limit labels in each drawer are easy to see and clearly specify the paper size limits for every drawer.
- + Loading paper is simple; users can change paper type from directly within the copy menus. When the trays are empty, a light on the drawer goes on.



Loading paper is straightforward. (U.S. model pictured)

- While a feed roller must be lifted prior to loading paper into the optional LCT, if users forget to lower the feed roller, it will automatically lower when the drawer is closed to prevent damage.



FEATURE SET

VERY GOOD

- + The device's non-upgradeable memory (2 GB) and hard drive (250 GB) capacities are above average when compared with the standard and maximum capacities of competitive models.
- The device's standard paper capacity of 3,500 sheets is competitive with the group.
- The device's maximum paper capacity of 6,650 sheets, however, is below average for the group.
- + The drawers support paper weights up to 256 gsm, which is the heaviest in the group.
- + The 150-sheet capacity of the bypass tray is tied for the highest in the group. In addition,

the bypass tray supports paper weights up to 300 gsm, which is among the heaviest in the group.

- The device supports a standard duplex single-pass feeder, which reduces wear and tear on originals and on the feeder itself. The single-pass feeder supports a paper capacity up to 100 sheets, which is competitive with the group.
- Users can select multi-copy runs up to 9,999.
- Up to 1,000 copy control codes are available, which is competitive with other models in the group.
- + Zoom range is between 25 and 400 percent, with increments of 0.1 percent—most other business colour models in the group let users zoom in increments of 1 percent.
- + Additional features include tab printing directly onto tabs, proof copy mode, blank page removal and card shot mode for copying both sides of an ID card onto one side of a single sheet.
- + There are three optional finishers: the 500-sheet internal finisher can staple up to 50 sheets in the corner or in 2 positions; and the 3,400-sheet modular finisher can staple up to 50 sheets in multiple positions and be outfitted with a two-/three-hole punch unit and a saddle-stitch kit. The kit supports tri-folding and can produce up to 80-page booklets, which is a higher booklet capacity than that of the majority of its competitors. Additionally, the 3,200-sheet finisher can staple up to 100 sheets and supports an optional saddle-stitch unit, which can also produce up to 80-page booklets, and supports V-folding and tri-folding; hole punching; a Z-fold unit and a two-tray post-sheet inserter. Other upgrades include a job separator tray.
- + The system employs the manufacturer’s latest bEST platform for seamless integration with third-party and home-grown solutions.
- + Embedded applications can be downloaded from Konica Minolta’s new bizhub Market-Place, which is supported via the LK-101 v3 i-Option kit. These apps allow users to, for example, display corporate announcements on their control panel, access a library of business forms and templates, check security settings, scan to Microsoft SharePoint and even order recycling boxes and print shipping labels.
- + Several i-Option kits provide a web browser, enhanced PDF encryption, searchable PDF support, voice-guided operation, as well as bar code, Unicode and OCR font support. PDF/1a and PDF 1/b file formats are also optional licence kits.
- The 33.6-Kbps fax option offers JBIG compression, batch file sending, battery backup, mailboxes, smoothing, timers and 2,000 speed-dial destinations. A dual-line option, which allow simultaneous transmissions and/or receptions, is available.



SECURITY FEATURES

EXCELLENT

AUTHENTICATION		
Authenticated printing		Standard
Network user authentication		Standard
Windows		Yes
Novell NetWare NDPS		Yes
LDAP		Yes
Kerberos		Yes
802.1x wireless		Yes
SMTP		Yes
POP before SMTP		Yes
Biometric		Optional
ID Card		Optional
HID		Yes
Common Access		Yes
Other	HID iClass Card Reader, HID Proximity Card Reader, Magnetic Stripe Reader, MiFare Card Reader, Indala Card Reader	
Registered department or user ID codes		Standard
Number		1,000
Restrict other features		Yes
HARD DRIVE		
Encryption		Standard
Maximum level		256-bit AES
Overwrite		Standard
Maximum number after a job		3x
Maximum number at end of lease		8x
Lock		Standard
Removable		Optional
Data auto-deletion in mailboxes		Standard
OTHER		
Authenticated printing		Standard
Address book access control		Standard
Common Criteria Certification		Yes
EAL level		3
Control panel lock/disablement		Standard
Digital signature		Standard (SMIME)
Verify document came from device		Yes
Verify document came from specific user		Yes
Encrypted PDF mode/encrypted scanning		Standard
Maximum level		128 Bit
Encrypted secure print		Optional
FIPS 140-2		Yes
Level		INA
HTTPS		Standard
Self-signed certificate		Standard
Certificate signing request		Standard

IEEE 2600	Pending
IP address filtering	Standard
Mac address filtering	No
IPsec	Standard
IPv6	Standard
Password-protected mailboxes	Standard
Password-protected web server	Standard
Port disablement	Standard
Protocol disablement	Standard
Secure print	Standard
Secure Sockets Layer (SSL)	Standard
S/MIME encryption	Standard
SNMPv3 support	Standard
Transport Layer Security (TLS)	Standard
Trusted Platform Module (TPM)	No
Unauthorised scan/copy protection block	Standard
Compatible with same-brand devices	Yes
Compatible with third-party devices	Yes
USB block	Standard
Additional features	Single Sign-On, PSES, bizhub SECURE
Third-party features	bEST Suite, Equitrac Authentication, Pharos Authentication

NA – Not applicable
 INA – Information not available



ACCESSIBILITY FEATURES

NOT RATED

Accessibility handle	Yes
Braille label kit	No
Enlarged display mode	Yes
Remote operator software	Yes
Tilting control panel	Yes
Voice guidance (audible instructions)	Opt
Voice operation (responds to voice commands)	No



ENVIRONMENTAL FEATURES

NOT RATED

Specified capable of running 30% post-consumer recycled paper	Yes
Specified capable of running 50% post-consumer recycled paper	Yes
Specified capable of running 100% post-consumer recycled paper	Yes
Instant/Quick Fusing	Yes
Duplexing	Yes

Toner-save mode	Yes
Energy-save mode/modes	Yes
RoHS compliant	Yes
Percentage of this product that is made with recycled materials/parts	5.7 (weight percent)
Are recycled materials taken from previous devices that have been returned by your customers	No
Are recycled materials taken from post-consumer materials	Yes
Are recycled materials taken from pre-consumer materials	No
Are recycled materials taken from bio-based materials	Yes
Product designed for recycling (easily disassembled, no binding agents)	Yes
Hardware remanufacturing program for this product	No
Toner cartridge recycling program for this product	Yes
Pre-paid label for return of toner cartridges/bottles for this unit	Yes
Toner recycling system	No
Ability to program features such as duplexing and auto shut-off over entire fleet	Yes
What tool can be used to do this?	Universal Print Driver
Green packaging materials for the product	Yes
Green packaging materials for its consumables	Yes
Packaging materials used	Cardboard, plastic bag, formed polystyrene, tape
Eco-Label Certifications	
ENERGY STAR	Yes
Other	ECMA-370/The Eco Declaration, Germany Blue Angel, Japan Eco Mark, EPEAT Gold
Tested energy consumption levels of the device (watts):	
Ready/Idle	167
Energy-save	82
Sleep mode	1.3
During Printing	990
How fast can this product be programmed to go into the following modes:	
Ready/Idle	0
Energy-save	120 seconds
Sleep mode	120 seconds
Can the above settings be programmed by a walkup user	No
First-print time after being in sleep mode (seconds)	22
Emissions output from this device for the following substances (mg/h):	
Ozone	0.3
Styrene	0.4
Benzene	0.02
TVOC	6.0
Dust	1.7
Other	None

INA: Information not available

NA – Not applicable

**TONER YIELD**

GOOD

- + Tested toner yield exceeded the rated yield by more than 4,000 impressions.
- Tested toner yield is lower than average compared with tested models in its speed range.

SUPPORTING TEST DATA

Test Environment: This product was tested in BLI's 929-square-metre U.S. test lab, in an environment monitored by an Extech RH S20 Digital RH/Temperature Recorder and Honeywell Model 61 Seven-Day Temperature/Relative Humidity Chart Recorder. All products lab tested by BLI are powered by dedicated circuits that are protected by ESP (Electronic Systems Protection, Inc.) surge protectors to prevent transient power and communication disturbances from affecting equipment under test.

Test Equipment: BLI's dedicated test network, consisting of Windows 2003 and Microsoft Exchange servers, Windows 7 and XP workstations, 10BaseT/100BaseTX network switches and CAT5 cabling.

Test Duration: Products are tested for two months, five weeks of which consists of a durability test during which the product is run at its manufacturer-rated maximum monthly duty cycle, with 25 percent of the test volume comprised of copy jobs and 75 percent comprised of print jobs. BLI's daily test usage is designed to replicate real-world use over an eight-hour workday, and as such includes a mix of various-size documents, simplex and duplex modes, and a mix of short, moderate and long run lengths, and on/off cycles, throughout the day. The durability evaluation also includes testing of the document feeder/scanner in simplex and duplex modes for an additional 20 percent of the monthly maximum volume, evenly divided over the course of the test. Imaging media includes virgin multi-use paper. Recycled multi-use paper comprised of 30, 50 and 100 percent post-consumer waste is also tested for up to 10 percent usage of each of the recycled media types.

Tested Configuration: Base model with FS-535 finisher, saddle-stitch unit, punch kit and 2,500-sheet large-capacity tray. i-Option searchable PDF kit and i-Option enhanced PDF encryption also included.

Test Procedures: The test methods and procedures employed by BLI in its lab testing include BLI's proprietary procedures and industry-standard test procedures, including a BLI-developed variation of ASTM's 1318-90 Test Method for Determination of Productivity using Electrostatic Copy Machines. In addition to a number of proprietary test documents, BLI uses an industry-standard KATUN test original for evaluating black image quality and test suites from Quality Logic to evaluate applications compatibility. Besides a visual observation, colour print quality is tested using the ANSI standard IT8 Colour Test Target, which is read using the Minolta CM503i Spectrophotometer, and samples are analysed using the CIE XY Chromaticity Diagram. Furthermore, density of black and colour output is measured using an X-Rite 428 Densitometer. Georgia-Pacific Spectrum Multi-Use Paper is used in the tests, 30 percent of which is recycled paper containing 30, 50 and 100 percent post-consumer content. Image quality is tested using Georgia-Pacific Printing Paper. Units are tested for compatibility on Windows 7 with Microsoft Office Suite 2010, as well as Adobe Acrobat Reader 10.0. Tests are conducted using U.S. letter/ledger paper; A4/A3 results may vary slightly.

BUYERS LABORATORY LLC • North America • Europe • Asia

John Lawler, CEO

Anthony F. Polifrone,
Managing Director

Gerry O'Rourke, Managing
Director, BLI International

Patti Clyne,
Senior VP of Sales

Daria Hoffman,
Managing Editor

Dr. Simon Plumtree,
European Managing Editor

Lynn Nannariello,
Assistant Managing Editor

Tracie Hines, Senior Editor,
Competitive Analysis Reports

Jamie Bsales,
Senior Product Editor, Solutions

George Mikolay,
Senior Product Editor, A3 MFPs

Marlene Orr, Senior Product
Editor, Printers and A4 MFPs

Lisa Reider, Senior
Product Editor, Scanners

and Environmental

Carl Schell, Senior Writer

Priya Gohil, Senior Editor

Jessica Schiftenhaus,
Associate Editor

Kaitlin Pendagast,
Research Editor

David Sweetnam,
Head of European Research
and Lab Services

Pete Emory, Manager
of Laboratory Testing

Martin Soane,
European Lab Manager

Pia Beddiges, Manager
of Competitive Services

T.R. Patrick, Art Director

Anthony Marchesini,
IT Director



RELIABILITY

Test Duration	300,000 impressions and 60,000 scans
Service Calls/PMs	0/0
Misfeeds	0
Misfeed Rate	NA



IMAGE QUALITY

Print Quality

Text	Very Good
Line Art	Excellent
Halftone Pattern	Excellent
Halftone Range	Excellent
Solids	Very Good

Print Density Range

Konica Minolta bizhub 754e	1.49 to 1.54
Density for devices in this class tested to date	1.05 to 1.64

Measurements are based on four readings corresponding to four different solid black locations on output. The higher the density reading, the darker the image.

Print Density Average

Konica Minolta bizhub 754e	1.52
Average density for devices in this class tested to date	1.37

The higher the density reading, the darker the image.

Halftone range:

Halftone output was visible from the 10% to 100% dot-fill levels, with distinct transitions between all levels.

Copy Quality

Text	Good
Line Art	Good
Halftone Pattern	Very Good
Halftone Range	Excellent
Solids	Very Good

Copy Density Range

Original	1.91 to 1.93
Konica Minolta bizhub 754e	1.45 to 1.45
Density for devices in this class tested to date	1.13 to 1.60

Measurements are based on two readings corresponding to two different solid black locations on the output. The higher the density, the darker the image.

Copy Density Average

Konica Minolta bizhub 754e	1.45
Average density for devices in this class tested to date	1.39

The higher the density reading, the darker the image.

Visible Halftone Range

Konica Minolta bizhub 754e	15% to 100%
Halftone increments on test original	15, 29, 53, 77, 83, 91, 95, 100%



PRODUCTIVITY

Print Productivity

Average Print Productivity | Competitive Average

	SPEED IN PPM		PERCENT OF RATED SPEED	
	1:1	59.7	59.6	79.5
1:2	55.6	56.4	74.1	74.5

Efficiency is tested using a 10-page black document. BLI obtains the overall efficiency for each mode by averaging the efficiency ratings (derived by dividing the tested speed of the device by the rated speed and then multiplying by 100) for each run length (1, 5, 10, and 20 sets). The unit's efficiency was tested using the PCL driver.

Tests were conducted using U.S. letter-size paper; A4 results may vary slightly.

Job Stream | Competitive Average

	SPEED IN PPM		PERCENT OF RATED SPEED	
	BLI	Competitive Average	BLI	Competitive Average
PCL	48.7	48.3	65.0	63.7
PostScript	36.4	38.2	48.5	50.6

BLI's job stream includes Word documents, Outlook e-mail messages, Excel spreadsheets, PowerPoint, HTML and Acrobat PDF files, totaling 19 pages. This test simulates the type of traffic a typical device might experience in a real-world, multi-user environment. All of the files are sent to the device as a group, at which time the stopwatch begins; timing ends when the last page of the last file exits the device. Job stream efficiency is determined by the percentage of the rated speed at which the device operates when producing real-world jobs. The closer the rate is to 100%, or if it exceeds 100%, the more efficient the device.

Copy Productivity

Average Copy Productivity | Competitive Average

	SPEED IN PPM		PERCENT OF RATED SPEED	
	BLI	Competitive Average	BLI	Competitive Average
1:1	58.6	61.1	78.1	80.6
1:2	53.2	55.4	70.9	73.0
2:2	62.6	62.2	83.5	82.1

Efficiency is tested using a 10-page black document. BLI obtains the overall efficiency for each mode by averaging the efficiency ratings (derived by dividing the tested speed of the device by the rated speed and then multiplying by 100) for each run length (1, 5, 10 and 20 sets).

First-Copy Time in Seconds | Competitive Average

Platen	6.91	5.00
Document Feeder	8.84	8.14

Productivity in Booklet Mode | Competitive Average

	SPEED IN PPM		PERCENT OF RATED SPEED	
	BLI	Competitive Average	BLI	Competitive Average
Print	61.3	57.2	81.8	75.0
Copy	62.1	59.4	82.9	78.0

Productivity is tested by having the device fold, saddle-stitch and output 30 sets of a 16-page PDF file. Testing in print mode is conducted using the PCL driver at 600 dpi. The closer the efficiency rate is to 100%, or if it exceeds 100%, the more efficient the device.

Tests were conducted using U.S. letter/ledger paper; A4/A3 results may vary slightly.



SCAN FUNCTIONS

Tested Scan Speed in IPM | Competitive Average

AUTO COLOUR		
1:1	71.3	63.9
2:2	141.7	95.7
BLACK		
1:1	71.9	68.7
2:2	143.5	107.1

Files are scanned at 300 dpi in PDF format. Competitive averages represent the average scan speed for devices in this speed range tested to date.

Tested Scan File Size in KB | Competitive Average

Full Colour (default compression)	1146.88	1,101.20
Full Colour (compact PDF)	167	321.39
Black	95.7	276.54
Black (compact PDF)	NA	48.02

Testing is conducted with single-page files scanned at 300 dpi in PDF format. Competitive averages represent the smallest file size for devices tested to date.



PRINT DRIVERS

Konica Minolta bizhub 754e Print Driver Features

	PCL	PostScript 3
Windows XP		
Auto Feature/Device Detection	Yes	Yes
Blank Page Removal	Yes	No
Booklet Printing	Yes	Yes
Carbon Copy Mode	Yes	Yes
Collate Sets	Yes	Yes
Consumables Gauge	No	No
Cover Mode	Yes	Yes
Default Duplex	Yes	Yes
Delayed Print	No	No
Envelope Selection	Yes	Yes
Exception Programming	Yes	Yes
Max Paper Sources Per Job	3	3
N-up Printing	2 to 16	2 to 16

Windows XP	PCL	PostScript 3
Overlay	Yes	Yes
Paper Gauge	No	No
Point Click Output Source	No	No
Point Click Paper Source	No	No
Poster Mode	Yes	Yes
Print and Hold	Yes	Yes
Print Text as Black	Yes	Yes
Proof Print	Yes	Yes
Quantity Selection	Up to 9,999	Up to 9,999
Reduction/Enlargement	25% to 400%	25% to 400%
Resolution Modes (dpi)	600, 1200	600, 1200
Save Settings	Yes	Yes
Secure Printing	Yes	Yes
Tab Printing	Yes	Yes
Toner Save Mode	Yes	Yes
Watermarks/Custom Watermarks	Yes/Yes	Yes/Yes



TONER YIELD

Tested Toner Yield | Competitive Average

Tested Impressions	46,491	54,436
Rated Toner Yield	40,800	53,415
Rated Drum Yield	300,000	1,298,571

Tested impressions are based on an average of two cartridges using BLI's 6% coverage toner yield test original.

CERTIFICATE OF RELIABILITY

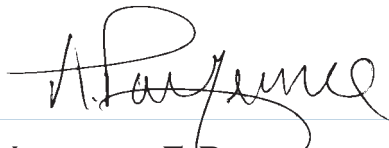
Awarded to

Konica Minolta, Inc.

for the performance of the

Konica Minolta bizhub 754e

in BLI's in-house durability test.



ANTHONY F. POLIFRONE
MANAGING DIRECTOR



JUNE 2014

DATE

This is to certify that when subjected to a 300,000-impression Buyers Lab durability test, the Konica Minolta bizhub 754e proved to be a highly reliable product.

BUYERS LABORATORY LLC

THE LEADING INDEPENDENT OFFICE PRODUCTS TEST LAB AND BUSINESS CONSUMER ADVOCATE

NORTH AMERICA ■ EUROPE ■ ASIA ■ www.BuyersLab.com

COPYRIGHT ©2014 BUYERS LABORATORY LLC. REPRODUCED WITH THE WRITTEN PERMISSION OF BLI.